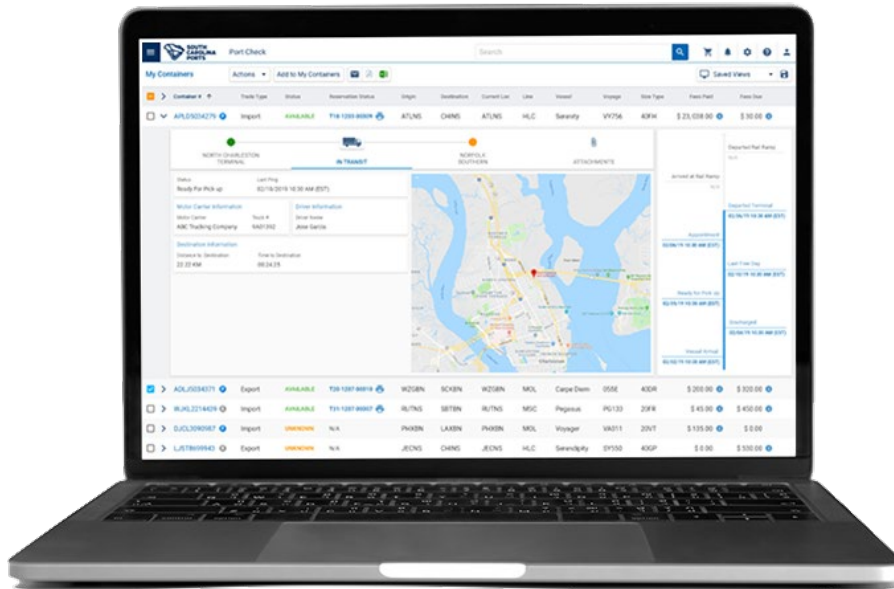


eModal Port Manager

A new solution for gateway customers that combines the proven features, stability, and extensive data connections of the world's largest port community system with infinite customization options to improve user experience, integrate third party data, and streamline information sharing.

What is eModal® Port Manager?

The eModal® Port Manager application is a new, highly configurable solution that allows port and terminal operators to leverage the industry standard [eModal Community Portal](#) (eCP) to implement a powerful, customized port community system that serves the unique needs of their port constituents. Like the legacy eCP solution, eModal® Port Manager provides a single window through which multiple stakeholders can collect information and use eModal executional tools to optimize the pickup and delivery of cargo, but there's so much more...



eModal® Community Portal vs. eModal® Port Manager: What's new?

By combining the maturity, stability, and extensive data repository of our off-the-shelf eModal.com SaaS platform with new functionality, configuration options, and custom integration of third-party data sources, we've created **a unique, fully brandable, digitized operational toolkit that drastically streamlines information sharing and collaboration for stakeholders across the landside container flow.**

The eModal® Port Manager option was designed to streamline existing "white label" branding and user interface (UI) customization options of the eModal Community Portal to benefit port communities worldwide. By adding their own logos, field names, and even custom web screens and services, port and terminal operators can fully brand the user interface and optimize the user experience (UX) to meet the specific needs of their port community.

With the release of the eModal® Port Manager application – which has been live for the Port of Oakland since 2018 – Advent is delivering the next generation of custom port community systems.

Feature Comparison

eModal® Community Portal vs. eModal® Port Manager

Function / Description	Available in existing eModal Community Portal?	Available in eModal Port Manager?
Role-based authentication to dynamically alter UI/UX flow after user login (i.e. trucker vs. shipper/BCO screen flow)	✗	✓
Ability to expose non-confidential gateway information without need for user validation/login to streamline info sharing	✗	✓
Services to curate/update vessel information across a port gateway	✗	✓
User dashboards specific to login persona (i.e. trucker, shipper/BCO, etc.)	✗	✓
Graphical truck turn time and queue time reporting	✗	✓
Services to curate/update empty container return instructions across a gateway	✗	✓
Integration of third-party data sources (Rail, Chassis/IEP, RFID, Vessel, etc.)	✗	✓
eModal Data Services (eDS) API suite to enable automated track/trace, PreGate/appointments, and fee payment direct from TMS and dispatch systems	✗	✓
Ability to integrate to third-party fee payment and appointment systems operated by the port or marine terminal operator from a single window UI	✗	✓

To learn how eModal® Port Manager can improve visibility and collaboration in your port gateway, contact Dennis Monts, EVP Commercial Operations, at dennis.monts@adventintermodal.com or visit our website at www.adventintermodal.com